

# RideAmigos

The Future of Workforce Mobility



# Connecting Commuters to the Regional Mobility Ecosystem

## MOBILITY OPTIONS

CARPOOL  
VANPOOL  
SHUTTLE  
TRANSIT (GTFS-RT)  
BIKING  
WALKING

## TDM PROGRAMS

INCENTIVES  
PREMIUM REWARDS  
CHALLENGES  
GUARANTEED RIDE HOME

## DATA & AUTOMATION

PASSIVE TRIP LOGGING  
MOBILITY INTEGRATIONS  
COMMUTE VERIFICATION  
ESRI ARCGIS

## ADMINISTRATION

MULTI-LEVEL ADMIN CAPABILITIES  
EMPLOYER NETWORKS  
REPORTING  
EMAIL MESSAGING  
SURVEY

CLOUD-BASED PLATFORM

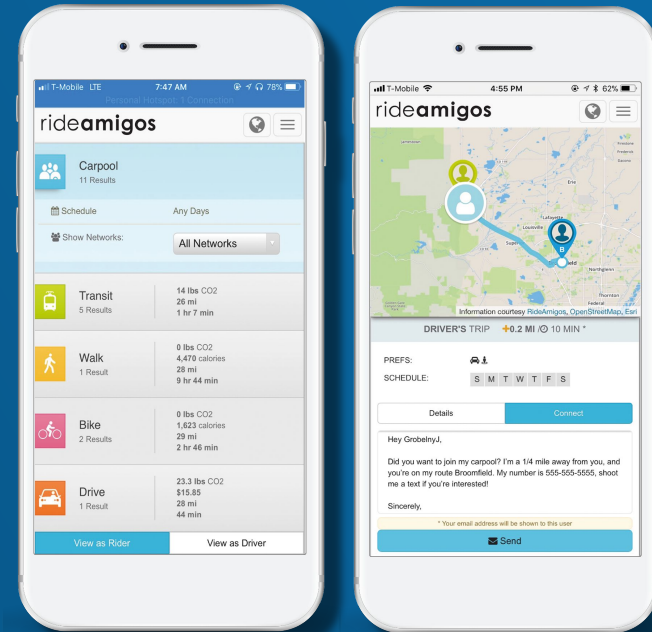
rideamigos

SUSTAINABLE  
CHOICES

COMMUTERS  
& EMPLOYERS

# Multimodal Trip Planning for Commuters

- Trip Planning for Car & Vanpool matching, Local Transit, Biking & Walking
- Mid route corridor ridematching
- Rideboard for events and one-time trips
- Mode comparison including public/private transportation networks and infrastructure
- Private Networks: Internal employee carpool matching



# Changing Commuter Behavior

## Turn-key TDM Solutions

### → Commuter Challenges

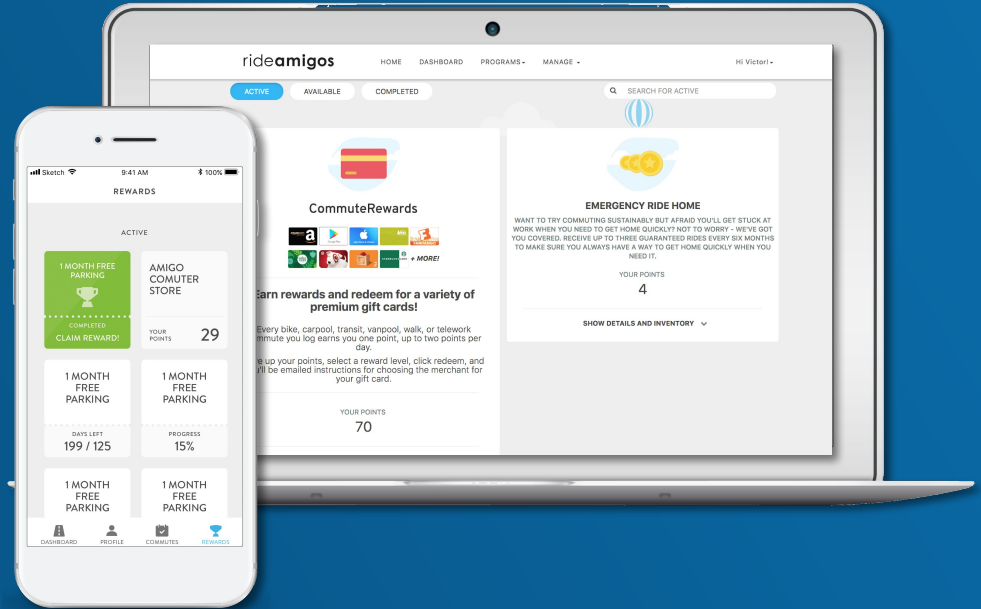
- ◆ Biketober
- ◆ Employer Competitions

### → Points Programs

- ◆ CommuteRewards:
  - Amazon
  - Starbucks
  - Airbnb
  - Charitable Donations

### → Guaranteed Ride Home

- ◆ Taxi/Car Rental
- ◆ Uber
- ◆ Lyft



# Parking Management

## Charging for parking

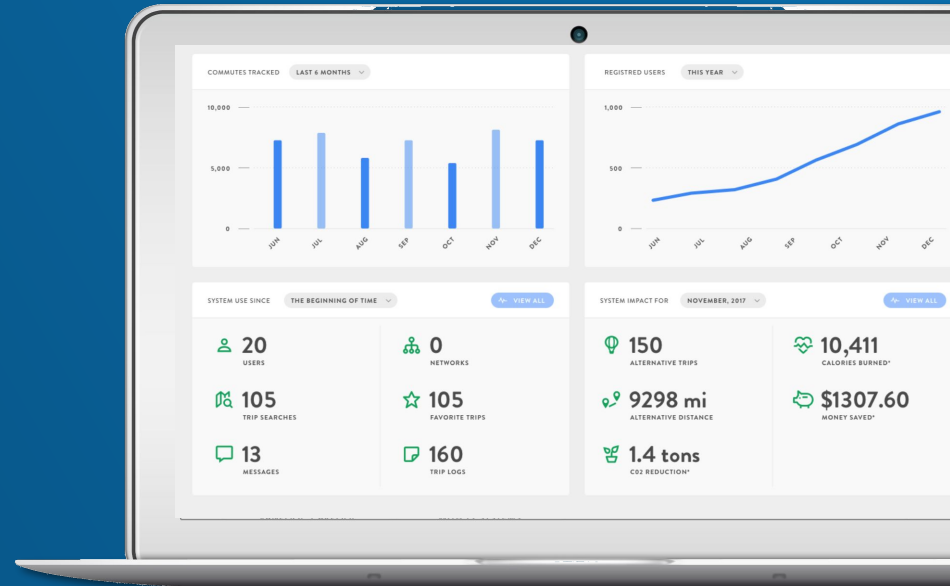
- Daily Parking Cash-out
- Badge Reader Integration
- Carpool Parking

The screenshot displays the AltoPark web application interface. At the top, a navigation bar includes links for Home, Dashboard, Admin, Events, Incentives, Challenges, and Tools. The user is logged in as Ben. The main content area is divided into two sections. The left section, titled "Clean Credit Program", provides a summary of the user's participation: 2 Parking Opt-Outs, \$2.00 in Unpaid Credit Earnings, and a total of \$2.00 in earnings. A "Manage My Parking" button is located at the bottom of this section. The right section, titled "Parking Calendar", shows a calendar for February 2018. The calendar uses color-coding to indicate the user's status for each day: green for "Credit", light green for "Opted-out", grey for "Parked", and dark grey for "Opted-out & Parked". Below the calendar, a table provides a detailed view of the user's parking history for the month of February, including dates, days of the week, status, and earnings.

Date	Day	Status	Earnings
29	Mon	Parked	\$0.00
30	Tue	Parked	\$0.00
31	Wed	Parked	\$0.00
01	Thu	Opted-out & Parked	\$1.00
02	Fri	Received Credit	\$1.00
04	Sun	Received Credit	\$1.00

# Comprehensive Administrative Dashboard

- Dashboards with macro and micro views of commuter program results
- Report on user, employer, regional impact and sustainability stats
- Data verification reports to support incentive programs
- Export or publish data as CSV, Excel, PDF or ArcGIS feature services



# Passive & Predictive Trip Logging App

*Regional and Employer Programs in the Commuters' Hands*

- Passive trip tracking and prediction between custom origin and work locations
- Program discovery and award redemption
- Mobile dashboard shows individual impact and sustainability stats
- Trip log integration



Confidential Material

# Mobility Integrations


## Trip Planning - Dynamic Layers

→ Vanpool 

→ Shuttle 

→ Ride Hailing Uber 

→ E-Scooters  

→ Car share 

→ Bike share 

## Integrated Trip Log Data

→ Carpooling  

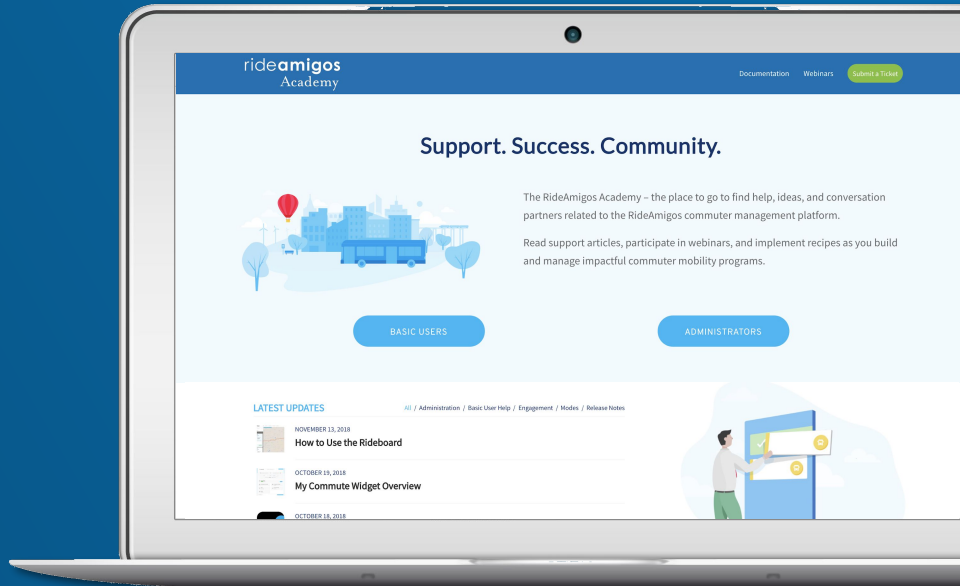
→ Ride Hailing Uber 

→ Activity 



# RideAmigos Academy

- Monthly Newsletter
- Release notes
- Monthly Coffee Talk Webinars
- Monthly Office Hours Webinars
- Periodic Training Updates
- Technical Support 8am-5pm
- Online “help” Center
- 24/7 Web Support
- 99.9 SLA



The background features a light blue rounded rectangle with several white, stylized clouds of varying sizes scattered across it.

# rideamigos

Victor Fani

[victor@rideamigos.com](mailto:victor@rideamigos.com)

+1 310 334 9696